

<u>PHYSICAL CHARACTERISTICS</u>	<u>SPECIFICATIONS</u>
Mechanical Dimensions:	Reference figure-1
Maximum Vacuum Bake Specification: (Not Operating)	8 Hours at 350°C at 1.0 x 10 <sup>-5</sup> Torr or Lower
Operating Temperature Range:	-50° to 120°C
<u>ELECTRICAL CHARACTERISTICS</u>	<u>SPECIFICATIONS</u>
Operation:	Analog
Maximum Operating Pressure:	5.0 x 10 <sup>-6</sup> Torr
Maximum Specified Operating Voltage:	3000 Volts
Bias Current @ 3,000 Volts:	35 to 55 Microamps
Resistance (For Reference Only):	55 to 85 Megohms
Minimum Gain @ 3,000 Volts:	1.0 x 10 <sup>7</sup>
Maximum Dark Current @ 3,000 Volts:	1.0 x 10 <sup>-11</sup> Amps
Maximum Dark Count @ 3,000 Volts:	120 Counts in 60 Seconds
Maximum Linear Output Current:	10% of Bias Current (Typical)

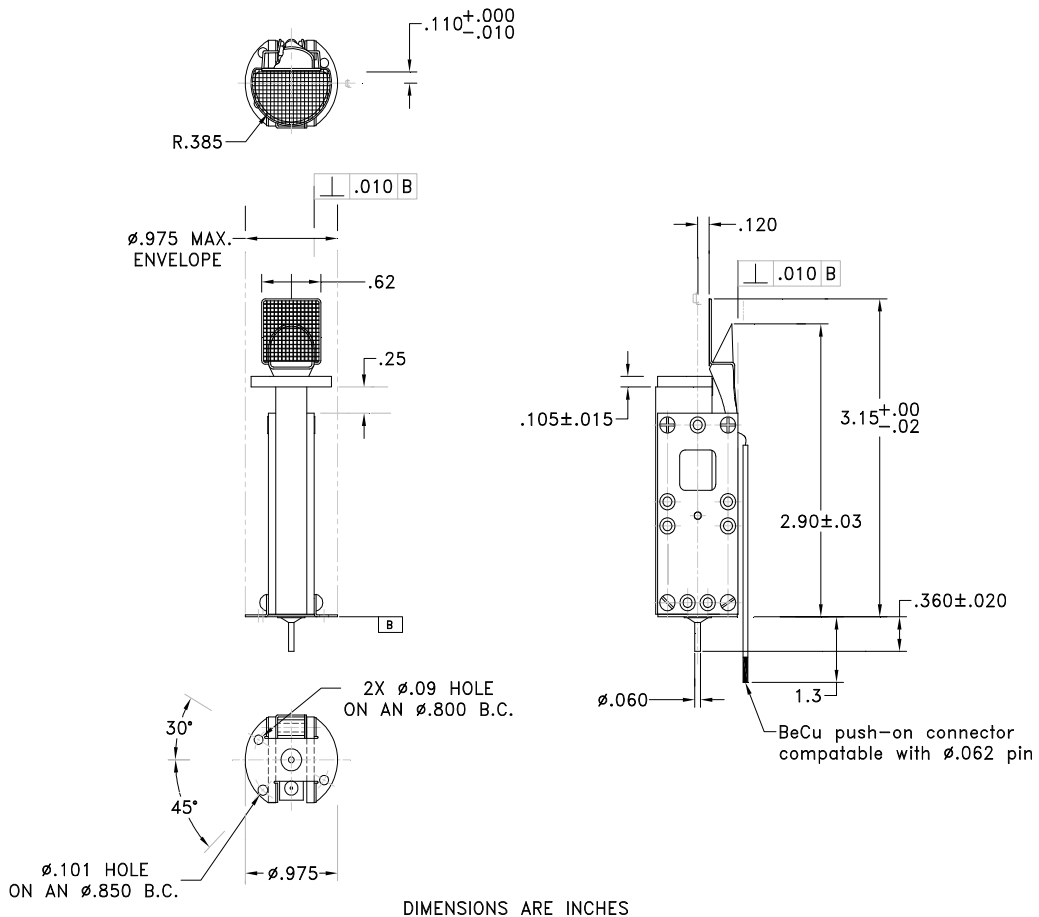


Figure-1, Mechanical Layout